



Working Studios


## **ABOUT US\_**

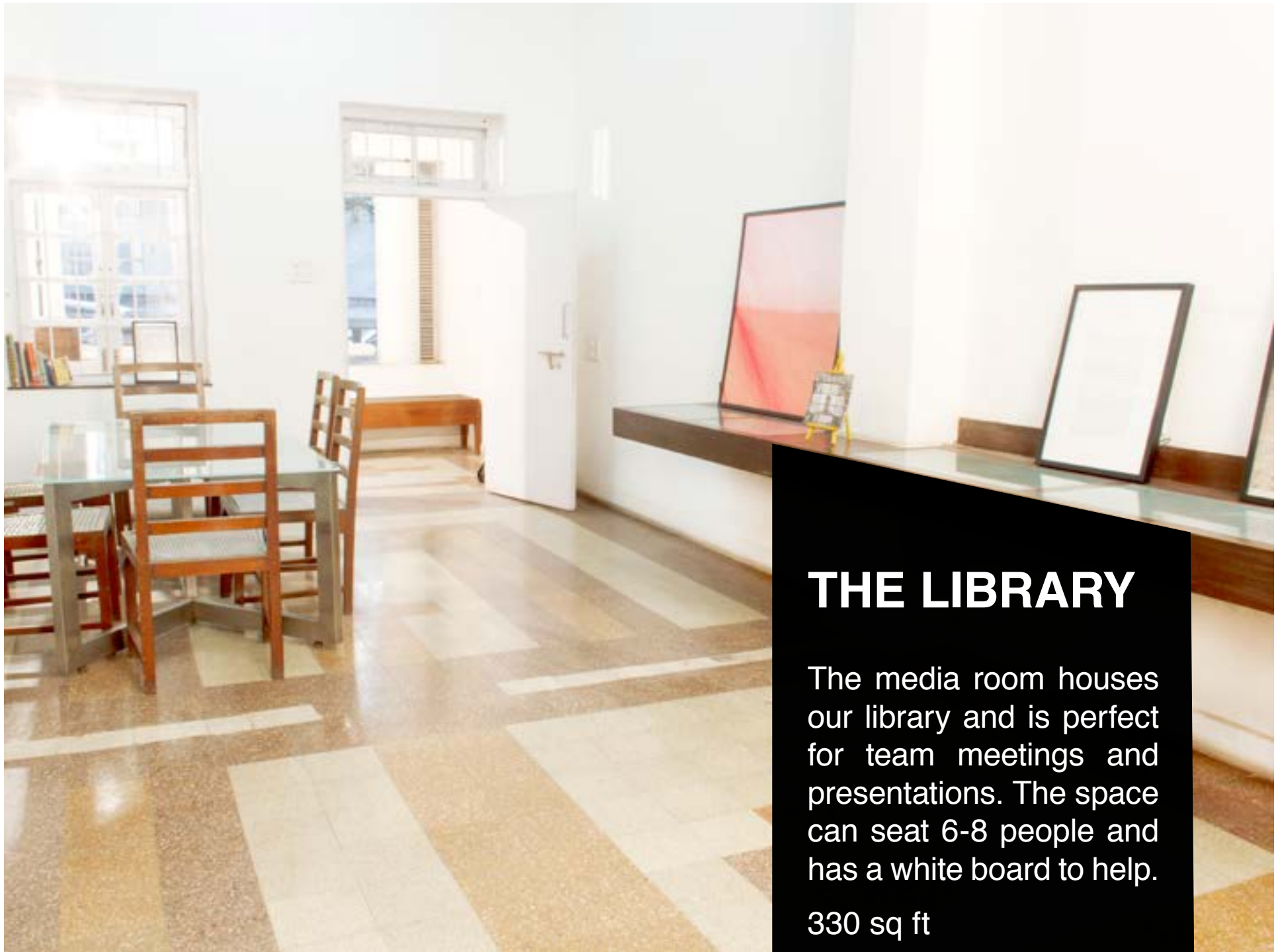
TIFA Working Studios is housed in a former 1940's art deco hotel located in the city center of Pune. It is a ground plus two building with unique spaces for you to explore.



## PROJECT SPACE

The project space situated on the ground floor is a multi-use dynamic area. It is ideal for workshops, conferences, plays and performances. 50 people can be seated here.

850 sq ft 

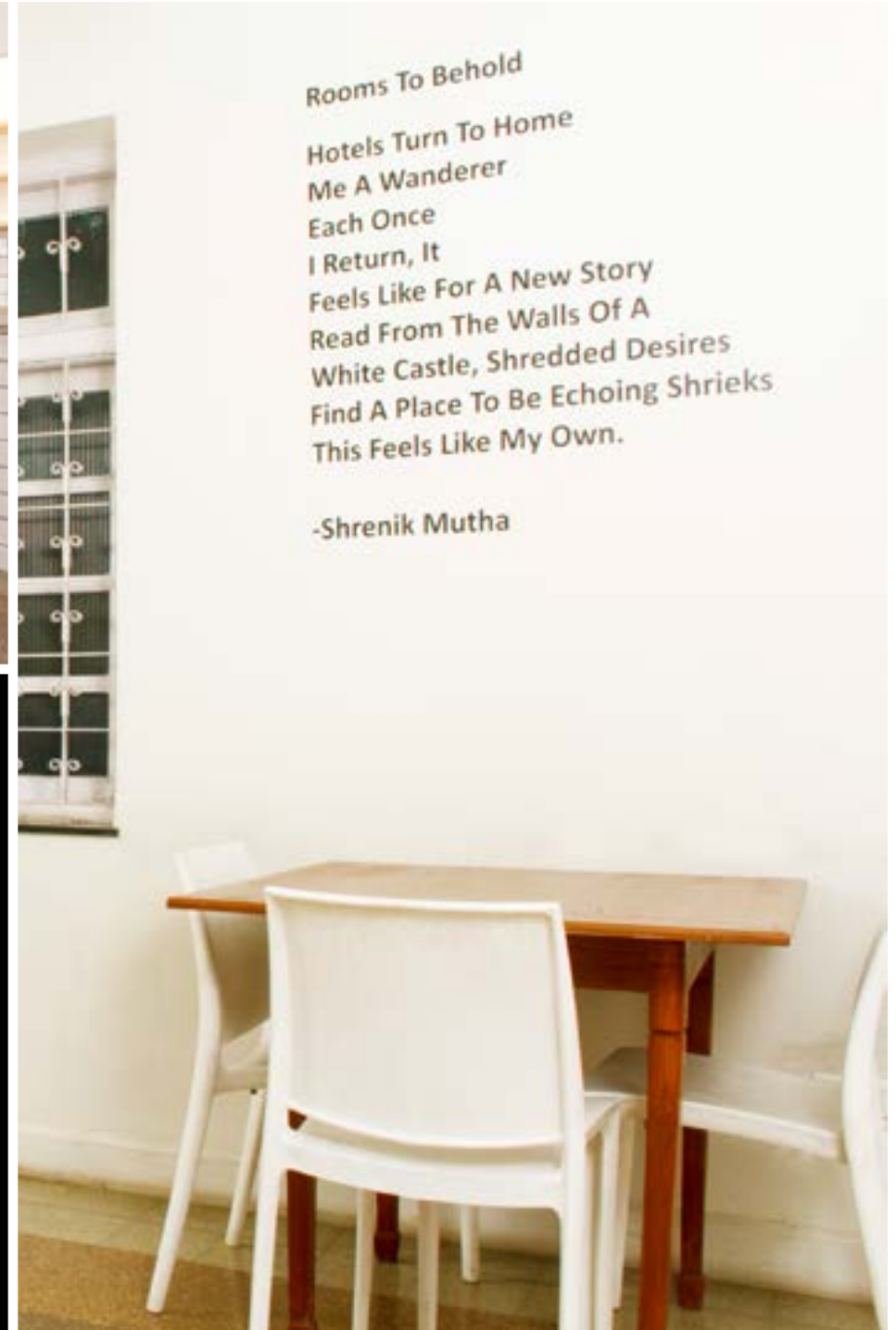


## THE LIBRARY

The media room houses our library and is perfect for team meetings and presentations. The space can seat 6-8 people and has a white board to help.

330 sq ft





## CAFE

The TIFA cafe is dedicated for food pop up's. Inviting restaurants, chefs, bakers, cafe's, who can serve freshly brewed coffee and try new experimental cuisines! The refrigerator and electric stove in the kitchen are happy to be your helpers.

\*This is a vegetarian only cafe\*  
170 sq ft



# LEVEL 1 STUDIOS

The first floor invites you into its 6 large spaces. Imagine your film shoots, performances, jamming sessions and rehearsals here.

300 sq ft



## **LEVEL 2** **STUDIOS**

There are 8 studios, not which are like. Direct, create and capture your photoshoots, art installations and all the experimentation.

200 sq ft





## **TERRACE**

---

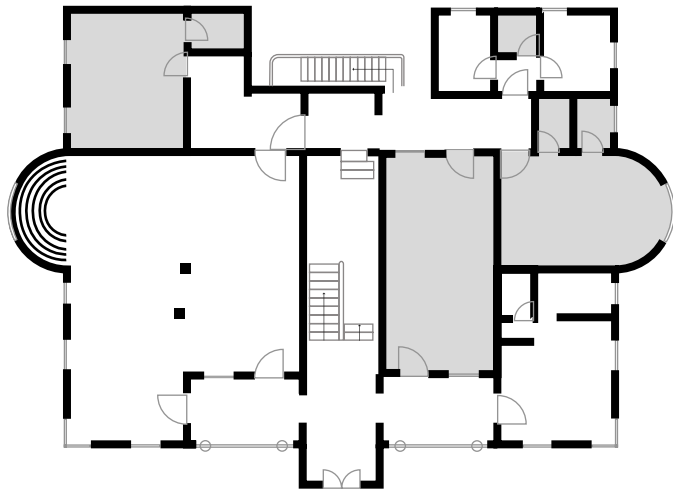
The sprawling terrace is the ultimate spot for music gigs, film screenings, live performances, yoga sessions, parties and everything exciting you can imagine.

3300 sq ft

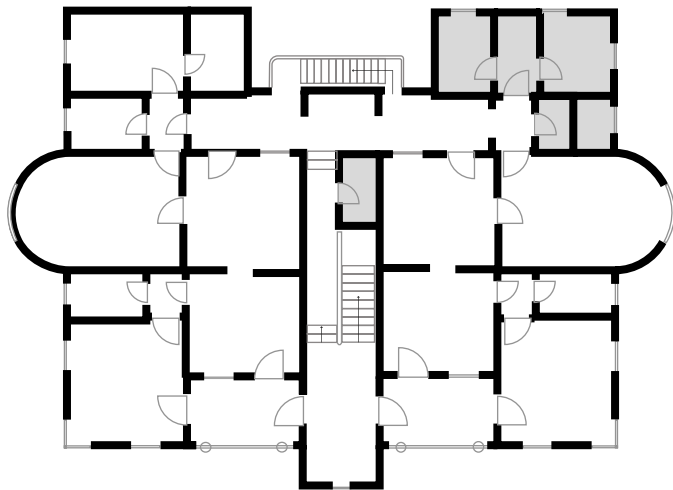
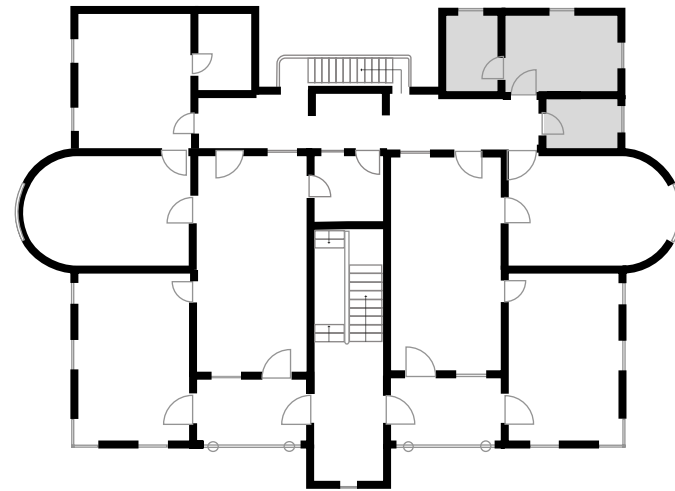




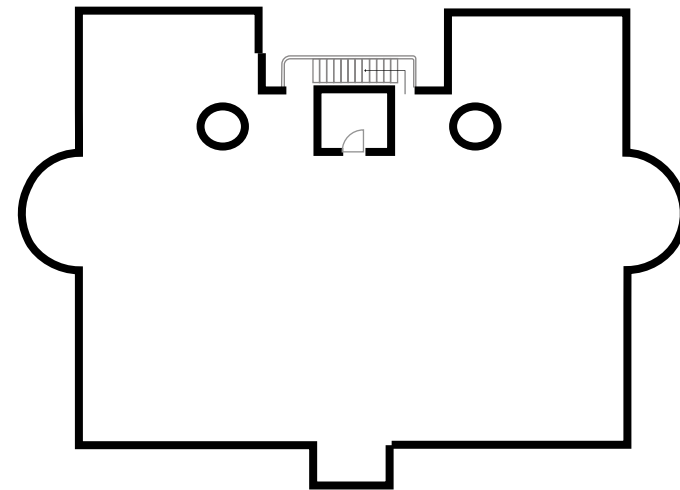
**Ground Floor**



**First Floor**



**Second Floor**



**Terrace**

---

**Get in touch:**

**+91 96234 44433 | [contact@tifa.edu.in](mailto:contact@tifa.edu.in)**